



Bobcat

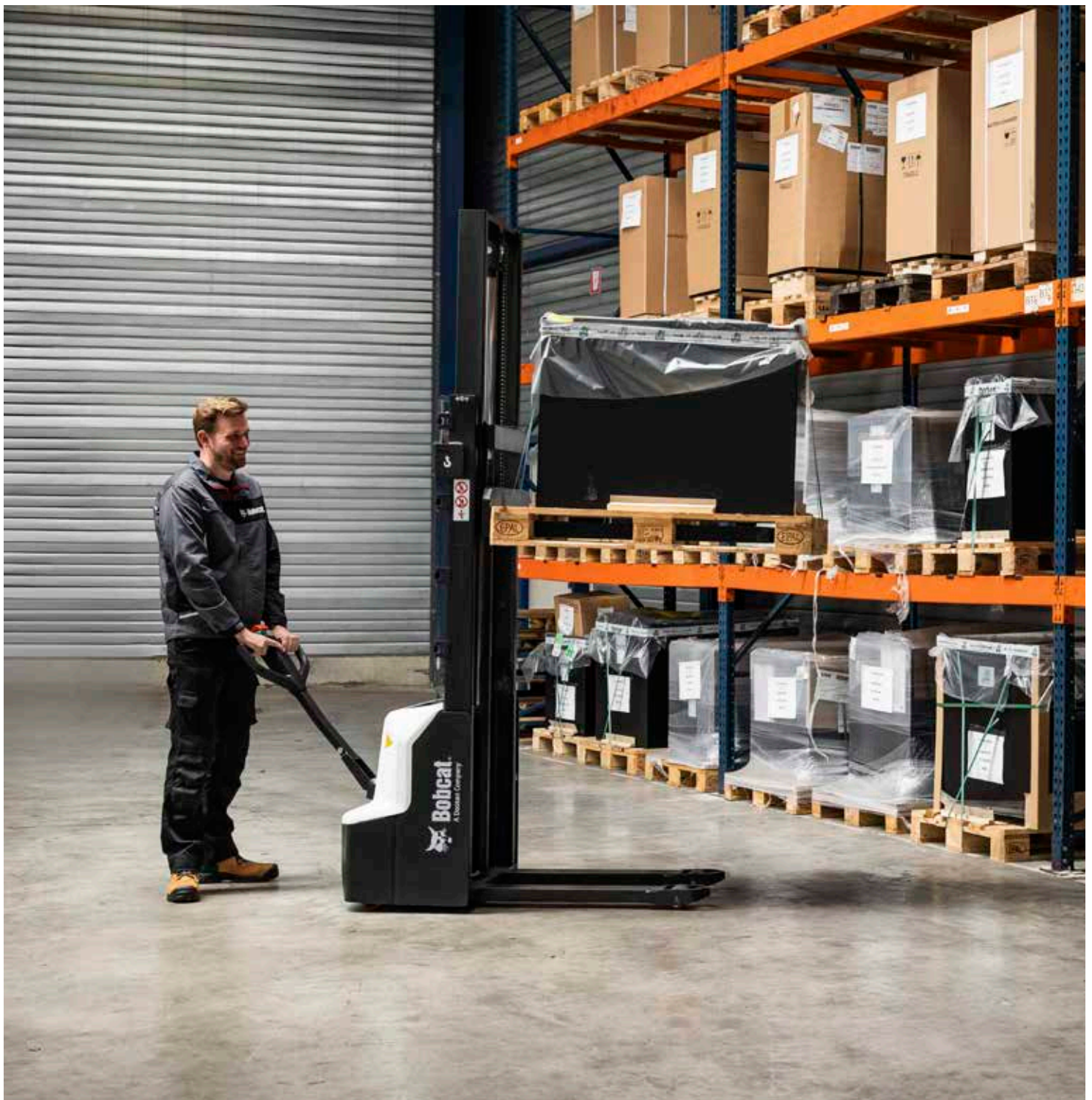
One Tough Animal

SPECIFICATIONS

ESSENTIAL STACKER

Warehouse equipment, 1.2-ton capacity

🌐 EMEA



MAIN SPECIFICATIONS

TECHNICAL DATA ACCORDING TO VDI 2198					
		Unit	LSM12N-7	LSM12N-7i	
CHARACTERISTICS					
1.3 Drive				electric	
1.4 Operator type				walkie	
1.5 Load capacity, rated load center	Q	kg		1 200	
1.6 Load center	c	mm		600	
1.8 Load distance	x	mm	760	763 / 680 ¹	
1.9 Wheelbase	y	mm	1 147	1 192 / 1 109 ¹	
WEIGHT					
2.1 Service weight (incl. battery)		kg	585	710	
2.2 Axle loading, with load, front / rear		kg	560 / 1 225	670 / 1 240	
2.3 Axle loading, without load, front / rear		kg	440 / 145	490 / 220	
TIRES					
3.1 Tires				polyurethane (PU)	
3.2 Tire size, front		mm	210 × 70	210 × 75	
3.3 Tire size, rear		mm		84 × 93	
3.4 Additional wheels (dimensions)		mm		100 × 50	
3.5 Wheels, number front / rear (x = driven wheels)				1x + 1 / 2	
3.6 Track width, front	b10	mm		550	
3.7 Track width, rear	b11	mm		400 / 515	
DIMENSIONS					
4.2 Height mast lowered	h1	mm	2 280	2 320	
4.4 Lift	h3	mm		see table	
4.5 Height mast extended	h4	mm	4 037	4 077	
4.6 Initial lift	h5	mm	–	120	
4.9 Height of tiller in drive position, min. / max.	h14	mm		710 / 1 150	
4.15 Height, lowered	h13	mm	86	90	
4.19 Overall length	l1	mm	1 710	1 752	
4.20 Length to forkface	l2	mm	560	602	
4.21 Overall width	b1	mm		800	
4.22 Fork dimensions	s/e/l	mm		60 / 180 / 1 150	
4.25 Distance over forks	b5	mm		570 / 685	
4.32 Ground clearance, center of wheelbase	m2	mm	26	16	
4.33 Aisle width for pallets 1 000 × 1 200 lengthways	Ast	mm	2 197	2 241 / 2 192 ¹	
4.34 Aisle width for pallets 800 × 1 200 lengthways	Ast	mm	2 145	2 188 / 2 169 ¹	
4.35 External turning radius	Wa	mm	1 350	1 395 / 1 312 ¹	
PERFORMANCE DATA					
5.1 Travel speed, with / without load		km/h	4.5 / 4.7	4.2 / 4.5	
5.2 Lift speed, with / without load		mm/s	120 / 190	110 / 140	
5.3 Lowering speed, with / without load		mm/s	130 / 110	130 / 110	
5.8 Max. gradeability, with / without load		(%)		5 / 10	
5.10 Service brake				electromagnetic	
ELECTRIC MOTOR					
6.1 DC – drive motor		kW		0.65	
6.2 DC – lift motor		kW		2.2	
6.3 Battery acc. to DIN 43535 A/B/C/no				no	
6.4 Battery voltage, nominal capacity K5		V/Ah		24 / 60	
6.5 Battery weight		kg	19	17	
6.6 Energy consumption acc. to VDI cycle		kWh/h	0.8	0.66	
ADDITIONAL DATA					
8.1 Type of control for drive and lift				DC speed control	
8.4 Sound level at driver's ear acc. to EN12053		db(A)		<70	

¹Load section lowered / Load section raised

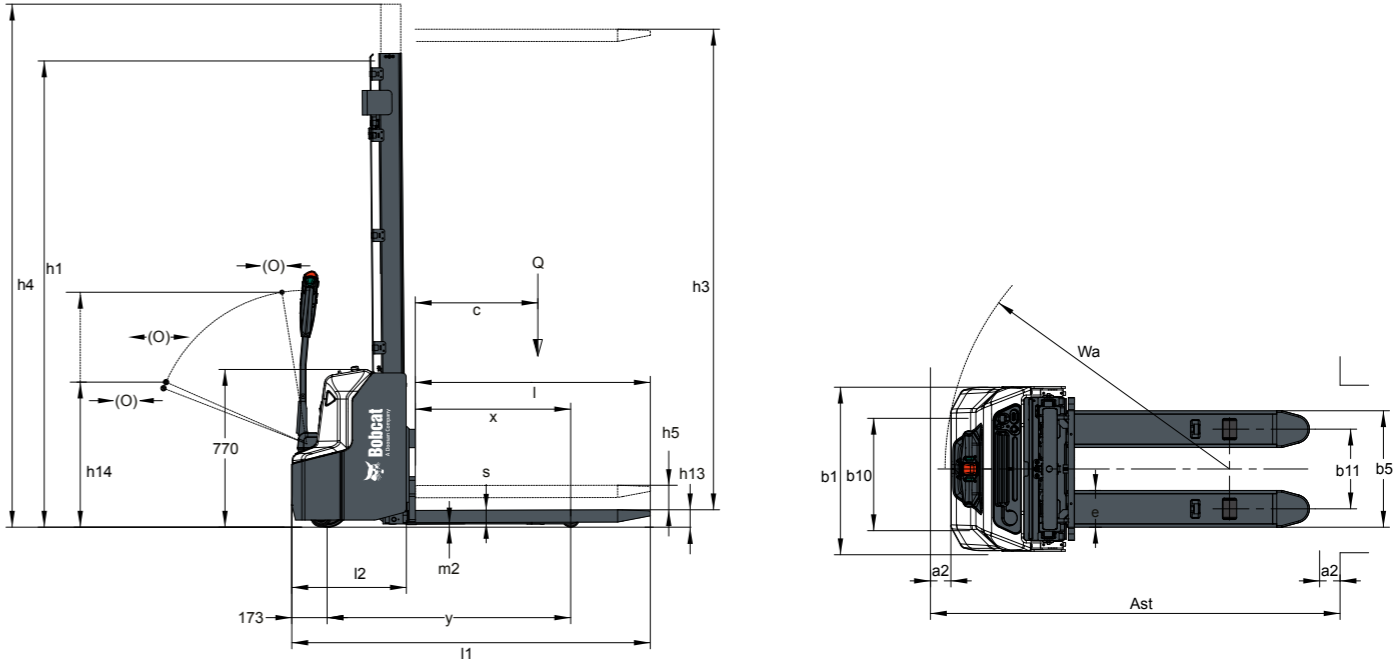
Note: Specification values quoted in this specification sheet have been rounded. Performance may vary depending on operating conditions. Products and specifications are subject to improvement and change without prior notice.

MAST SPECIFICATIONS & RATED CAPACITIES

LSM12N-7						
MAST TYPE	MAXIMUM FORK HEIGHT (H3)	HEIGHT MAST LOWERED (H1)	HEIGHT MAST EXTENDED (H4)	FREE LIFT (H2)	LIFT + FORK HEIGHT (H3 + H13)	RESIDUAL CAPACITY
	mm	mm	mm	mm	mm	kg
SIMPLEX	1 514	1 930	1 930	1 514	1 600	1 200
	1 914	2 330	2 330	1 914	2 000	1 200
STD	2 814	1 930	3 337	–	2 900	1 000
	3 114	2 080	3 637	–	3 200	800
	3 514	2 280	4 037	–	3 600	700

LSM12N-7i						
MAST TYPE	MAXIMUM FORK HEIGHT (H3)	HEIGHT MAST LOWERED (H1)	HEIGHT MAST EXTENDED (H4)	FREE LIFT (H2)	LIFT + FORK HEIGHT (H3 + H13)	RESIDUAL CAPACITY
	mm	mm	mm	mm	mm	kg
SIMPLEX	1 514	1 970	1 970	1 514	1 600	1 200
	1 914	2 370	2 370	1 914	2 000	1 200
STD	2 514	1 820	3 077	–	2 600	700
	2 814	1 970	3 377	–	2 900	800
	3 114	2 120	3 677	–	3 200	1 000
	3 514	2 320	4 077	–	3 600	1 200

► DIMENSIONS: LSM12N-7(i)



FINANCING OPTIONS

24, 36, OR 48-MONTH FINANCING*

Take advantage of 24, 36, or 48-month financing programs starting from **0% interest** and improve your cash flow.

Ask your dealer about the available financing offers.

340 MACHINES / **150** ATTACHMENT FAMILIES / **1** TOUGH ANIMAL



**SKID-STEER
LOADERS**



**COMPACT TRACK
LOADERS**



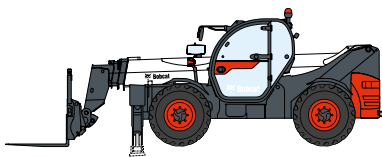
**SMALL ARTICULATED
LOADERS**



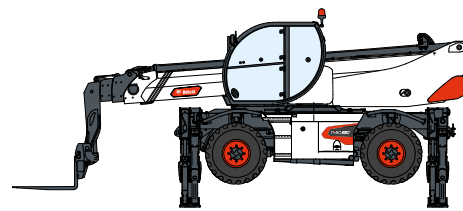
**COMPACT
EXCAVATORS**



FORKLIFTS



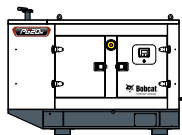
TELEHANDLERS



ROTARY TELEHANDLERS



**WAREHOUSE
EQUIPMENT**



GENERATORS



**AIR
COMPRESSORS**



**LIGHT COMPACTION
EQUIPMENT**



**MINI TRACK
LOADER**



MOWERS



ATTACHMENTS

DOOSAN

Bobcat is a Doosan Company. Doosan is a global leader in construction equipment, power & water solutions, engines, and engineering proudly serving customers and communities for more than a century. | Bobcat and the Bobcat logo are registered trademarks of Bobcat Company in the United States and various other countries. ©2025 Bobcat Company. All Rights Reserved.

www.bobcat.com

©2025 BOBCAT B4503301-EN (04-25)



Bobcat

*Financing options may vary by country and dealer. Always ask your dealer about currently available financing options. Terms and conditions may apply.

Doosan Bobcat EMEA, U Kodelky 1810, 263 12 Dobříš, Czech Republic